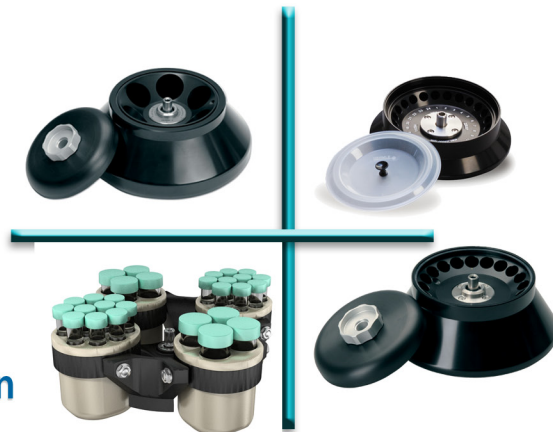


HERMLE
Benchmark

Z36 HK

Super Speed Centrifuge

- "Super Speed" centrifuge, up to 65,395 x g
- Benchtop design
- Advanced programming with auto rotor recognition
- Optional, high capacity swing out rotor



Z36 HK Summary

Speed up to 30,000 rpm
G-Force up to 65,395 x g
Swing Out Capacity:
4 x 250 ml
12 x 50 ml
28 x 15 ml
6 x microplates
Angle Rotor Capacity
30 x 1.5/2.0 ml
6 x 85 ml
6 x 50 ml
20 x 10 ml

Z36 HK Features

Microprocessor Control

- Over-speed protection
- Automatic rotor identification
- PreCool function
- Program Storage (99)
- Momentary spin button
- Imbalance detection
- Adjustable Accel/Decel
- Audible end of run alarm

Maintenance free induction drive
Motor driven safety lid-lock
Quiet operation, less than 60 DB
Splash proof display
Powerful Refrigeration
(Room temp to 4°C in less than 10 min.)

Z36 HK Specifications

Speed Range: 200 to 30,000 rpm
Max. RCF: 65,395 x g
Max Capacity: 6 x 250 ml
Timer: up to 99 hr, 59 min.
Dimensions: 28.1 x 20 x 16.5 in.
(W x D x H) 71.5 x 51 x 42 cm.
Weight: 200 lbs (91 kg)
Electrical: 120 or 230V, 50/60Hz
Power Draw: 1800W
Temp Range: -20° - 40° C



The Z36 HK is the result of many years of experience in the design of universal centrifuges, high speed centrifuges and compact microcentrifuges. The result is a “Super-Speed” centrifuge with unmatched performance amongst benchtop centrifuges.

A robust motor drive powers a variety of high speed angled rotors to speeds that would generally only be achievable in large, floor-standing ultra centrifuges. 2.0ml microtube samples can reach forces above 65,000 x g, while 50ml samples, as high as 41,410 x g.

In addition to its high speed capabilities, the Z36 HK doubles as a universal centrifuge with a 4 x 250ml swing out rotor (offering inserts for all common tube sizes) as well as a 2 x 3 position swing-out microplate rotor.

Advanced microprocessor controls allow for instant rotor identification, which automatically converts the rotational speed to the relevant g-force (rcf), preventing the user from setting a speed above the capabilities of the installed rotor. In addition to retrieving saved programs, the easy to use front panel can adjust accel/decel rates, and change the end of run alarm tone.

Ordering Information:

Z036-HK*

Z36 HK Refrigerated Centrifuge (without rotor), 120V

*115V with US Plug. For 230V (EU Plug), please order -E.

High Speed Rotors:



Item: Z326-1220-36

12 x 1.5/2.0ml Angle Rotor (40°)

Max Speed: 30,000 rpm / 65,395 x g

Accel: 44 sec. / Decel: 70 sec.



Item: Z326-0650-HS-36

6 x 50ml Angle Rotor (26°)

Max Speed: 21,000 rpm / 41,410 x g

Accel: 50 sec. / Decel: 50 sec.



Item: Z326-0485-36

4 x 85ml Angle Rotor (30°)

Max Speed: 20,000 rpm / 41,137 x g

Accel: 42 sec. / Decel: 52 sec.

Inserts/Adapters

Z326-50-A30: 30ml round

Z326-50-A15R: 15ml (conical or round)

Inserts/Adapters

Z326-85-A15R: 15ml round

Z326-85-A15: 15ml conical

Z326-85-A50R: 50ml round

Z326-85-A50: 50ml conical



Item: Z326-3020H-36

30 x 1.5/2.0ml Angle Rotor (40°)
Hermetically Sealed Lid

Max Speed: 20,000 rpm / 42,032 x g

Accel: 55 sec. / Decel: 55 sec.



Item: Z326-2010-36

20 x 10ml Angle Rotor (30°)

Max Speed: 16,000 rpm / 28,045 x g

Accel: 40 sec. / Decel: 40 sec.



Item: Z326-0685-36

6 x 85ml Angle Rotor (38°)

Max Speed: 13,000 rpm / 21,726 x g

Accel: 60 sec. / Decel: 70 sec.



Item: Z366-06250-36

6 x 250ml Angle Rotor (28°)

Max Speed: 10,000 rpm / 15,650 x g

Accel: 82 sec. / Decel: 130 sec.

Inserts/Adapters

Z326-85-A15R: 15ml round

Z326-85-A15: 15ml conical

Z326-85-A50R: 50ml round

Z326-85-A50: 50ml conical

Inserts/Adapters

Z366-06250-A15: 4 x 15ml conical

Z366-06250-A50R: 50ml round

Z366-06250-A50: 50ml conical

Additional Rotors (Low Speed):



Item: Z326-02MP-36

Swing Out Rotor
2 x 3 microplates (90°)

Max Speed: 4,500 rpm / 2,716 x g

Accel: 20 sec. / Decel: 25 sec.

Inserts

BT1500-A1520: 20 x 1.5ml

BT1500-A05: 20 x 0.5ml



Item: Z326-3015-36

30 x 15ml Angle Rotor (35°)

Max Speed: 4,500 rpm / 2,830 x g

Accel: 13 sec. / Decel: 17 sec.

Inserts/Adapters

C3100-ADP: 5-7ml (12-13mm)



Item: Z366-250-36

4 x 250ml Swing Out Rotor

Max Speed: 4,000 rpm / 2,987 x g

Accel: 20 sec. / Decel: 25 sec.



Z366-250-LID

Inserts:	Tube	qty/ insert	qty./ rotor
Z366-250-A250	250ml	1	4
Z366-250-A100	100ml	1	4
Z366-250-A50	50ml conical	3	12
Z366-250-A15	15ml conical	7	28
Z366-250-A10	10ml	8	32
Z366-250-A57	5/7ml	14	56
Z366-250-LID	Hermetically Sealed Lid, 2/pk	1	4

*Inserts sold in 2/pk.
Rotor accepts 4 inserts (2 x 2/pk.)

HERMLE

Benchmark

www.hermleUSA.com
PH: 908-769-5555 EM: info@benchmarkscientific.com

Also Available from Benchmark:

High Speed Microcentrifuges:



Z216 Series High Speed Microcentrifuges

- Available with or without refrigeration
- Up to 44 tube capacity (44 x 1.5/2.0ml)
- Max Speed: 15,000 rpm / 21, 379 x g



High Capacity Centrifuges:

Z446 Series High Capacity Centrifuges

Swing Out Rotor Accepts up to:

- 56 x 15ml conical tubes
- 28 x 50ml conical tubes
- 12 x microplates

